



Art. 8401.5 Pouring set Easy Stainless steel

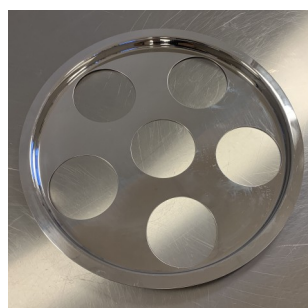
Indirectly Heated Stainless Steel Melting Pot with 6 Stainless Steel Pouring Cans. This stainless steel melting pot, designed for safe and efficient production of poured candles, utilizes an indirect heating method based on a bain-marie system. It includes six stainless steel pouring cans, each with a capacity of 1.5 liters, ensuring that the desired color is always readily available. The pot is supplied with a durable plastic lid and can optionally be equipped with an insulating cover and individual stainless steel lids for the pouring cans.(art. 8431.01).



Art. 8431 Pouring can 1,5L (order separately)



Art. 8431.01 Lid for pouring cylinder (order separately)



Art. 8401C Condense ring (order separately)



Art. 8401.01 Insulation blanket (order separately)

Tankcapacity: 27 liter
 Height: 450 mm
 Depth: 300 mm
 Diameter: 350 mm
 Power requirements: 800 Watt / 230 Volt

Thermostat settings: 30 - 100 °C
 Overheating protection: Yes
 Can capacity: 1,5 liter each
 Can dimensions: 85x260 mm
 Insulation: Yes